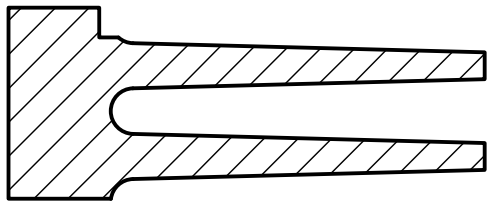
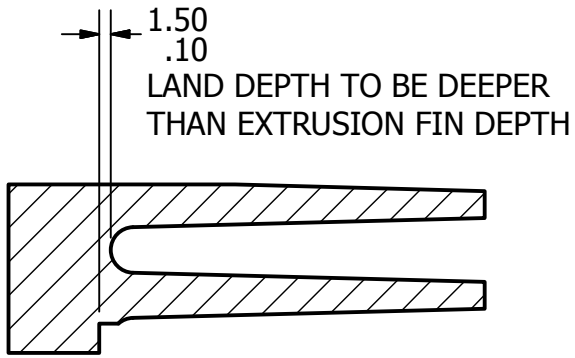


NOTES:

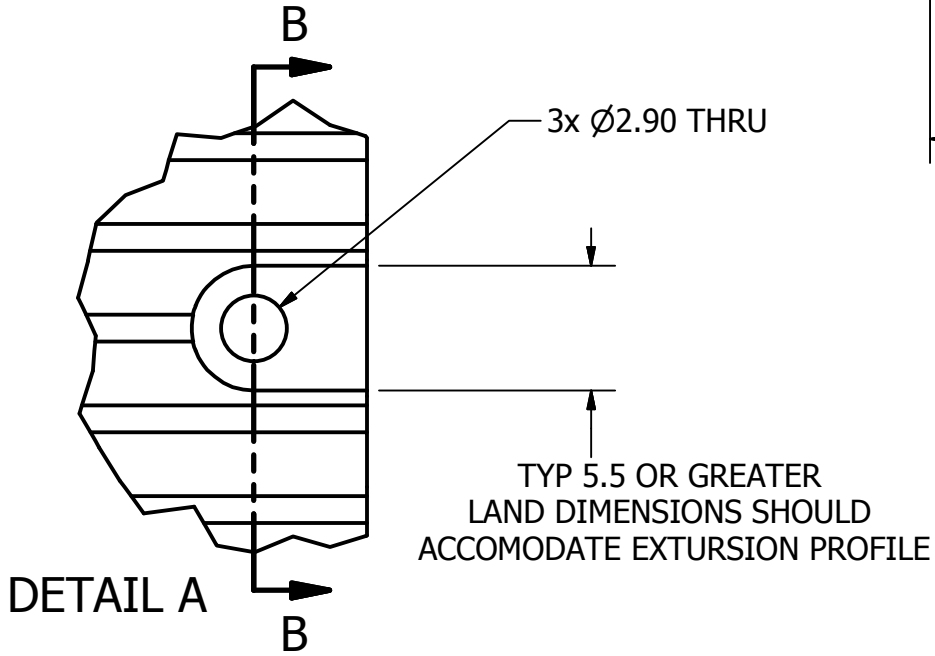
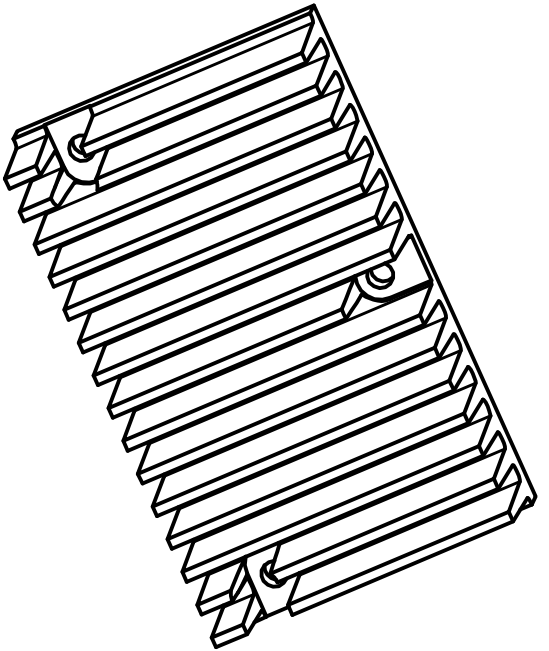
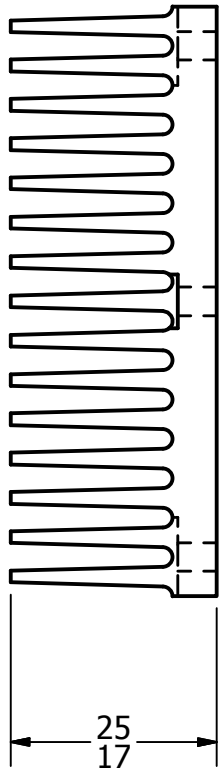
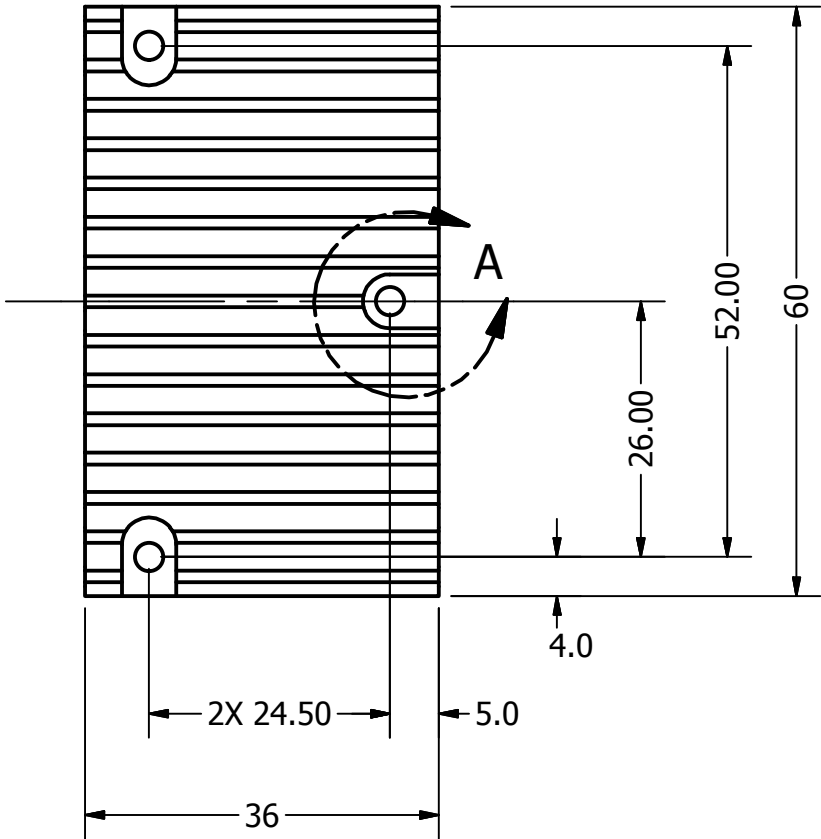
1. **HEATSINK EXTRUSION PROFILE TBD BY MANUFACTURER**
2. ASSOCIATED CAD FILE: NZ2Heatsink_NZ2HS.STEP
3. BREAK SHARP EDGES
4. QUANTITY NOTED IN RFQ

REVISION HISTORY

ZONE	REV	DESCRIPTION	DATE	APPROVED
	0	INITIAL RELEASE	12/13/2020	J. HAUPT



SECTION B-B



ENGINEER
Justine Haupt 12/13/2020

ALL UNITS IN MM
DECIMAL TOLERANCES:

X = ±.50
X.X = ±.30
X.XX = ±.16
X.XXX = ±.08

ALL SURFACES
Ra µm
UNLESS OTHERWISE NOTED

.8 ✓

Skys⁺ EDGE
www.skysedge.us

(631) 965-3409
justine@skysedge.us

NZ2 HEATSINK

SIZE	PROJECT	DWG NO	REV
B		NZ2HS	0