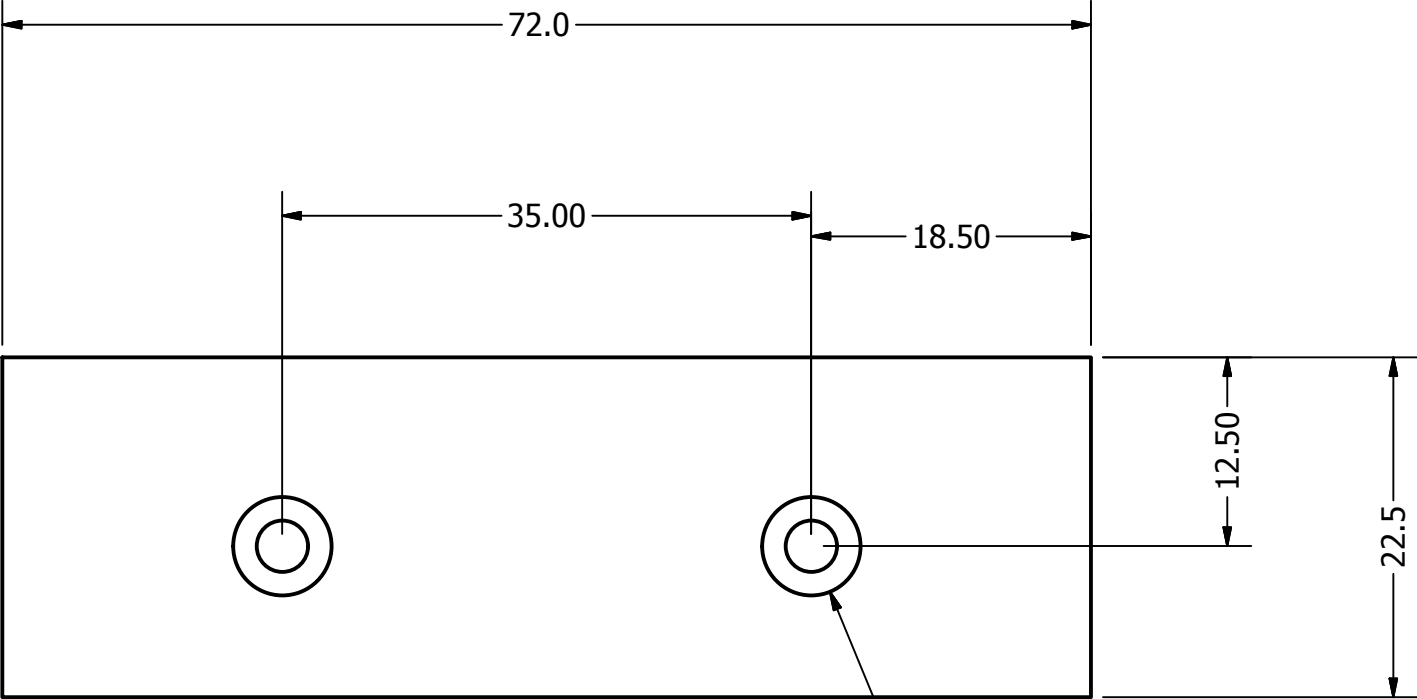
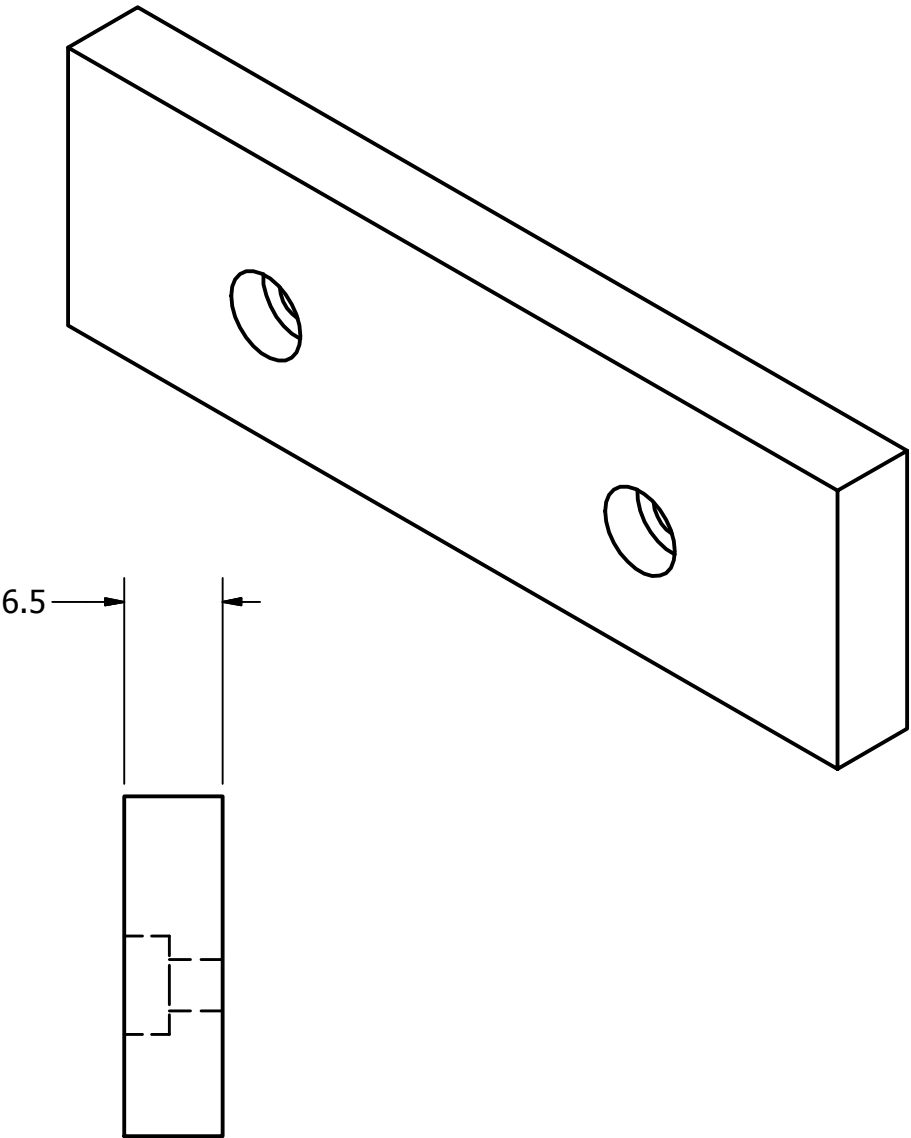


- NOTES:
- 1. MATERIAL: ALUMINUM (ANY 6--- OR 7--- SERIES)
 - 2. ASSOCIATED CAD FILE: Heatsink_NZ1HS.stp
 - 3. BREAK SHARP EDGES
 - 4. QUANTITY: AS INDICATED IN RFQ



2X Ø3.40 THRU
└┐ Ø6.50 ▽ 3.00



ENGINEER Justine Haupt2/24/2019		Skys ⁺ EDGE (631) 965-3409 justine.haupt@gmail.com	
ALL UNITS IN mm DECIMAL TOLERANCES: X = ±.50 X.X = ±.30 X.XX = ±.16 X.XXX = ±.08		TITLE NZ HEAT SINK	
		SIZE B	REV 0