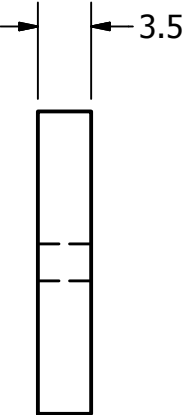
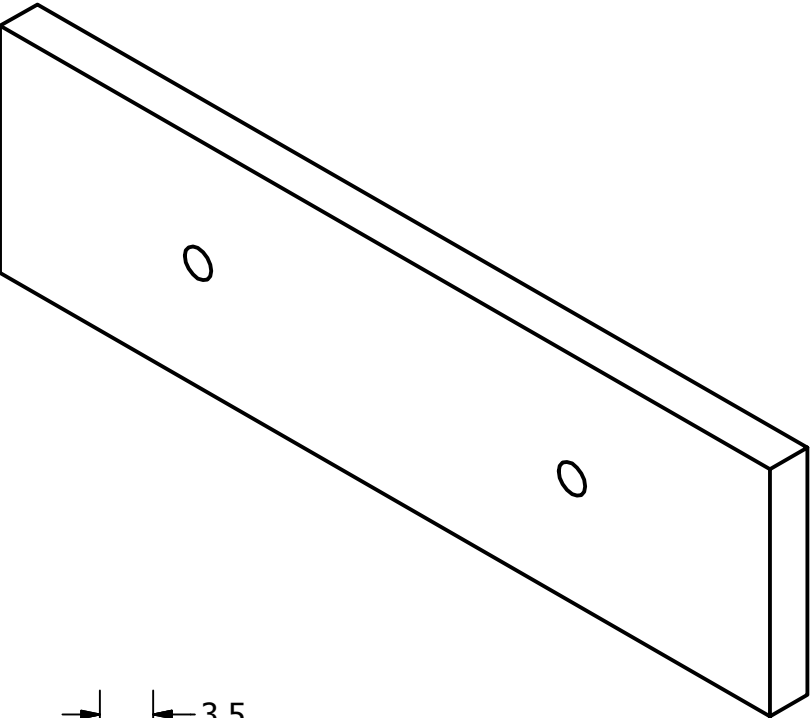
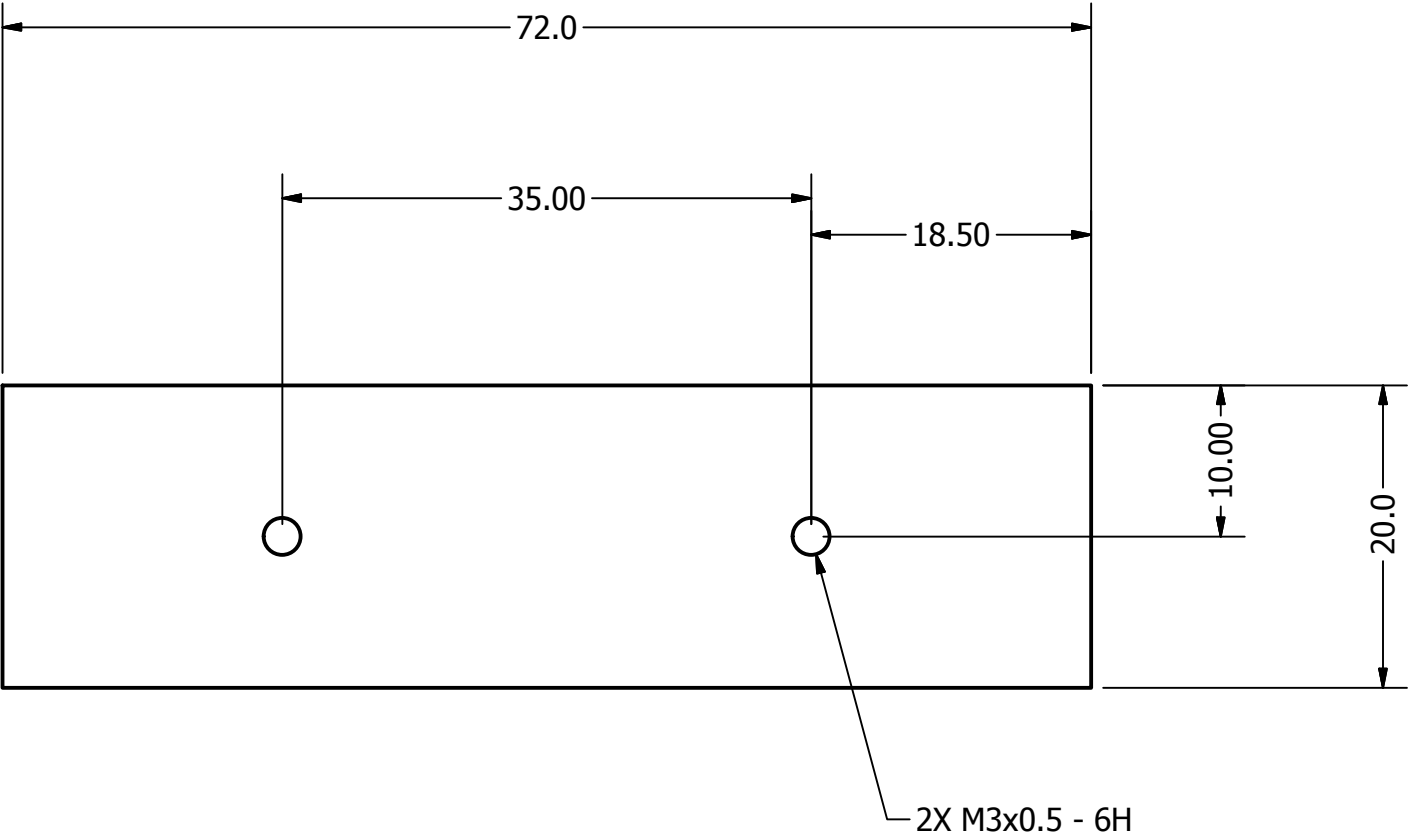


- NOTES:
- 1. MATERIAL: ALUMINUM (ANY 6--- OR 7--- SERIES)
 - 2. ASSOCIATED CAD FILE: BackingBar_NZ1BB.stp
 - 3. BREAK SHARP EDGES
 - 4. QUANTITY: AS INDICATED IN RFQ



ENGINEER Justine Haupt		2/24/2019		Skys ⁺ EDGE (631) 965-3409 justine.haupt@gmail.com	
ALL UNITS IN mm DECIMAL TOLERANCES: X = ±.50 X.X = ±.30 X.XX = ±.16 X.XXX = ±.08					
TITLE NZ BACKING BAR					
SIZE B		PROJECT		DWG NO NZ1BB	
				REV 0	